



“ BencHEIT Survey and Preparing for BM2017 ”

**Yvonne Kivi
Teemu Seesto**

BencHEIT – BM-survey

Content of these slides

- 3 Principals and participation in the survey
- 4 Survey dimensions
- 6 BM2017 Timetable and new features
- 8 The learning curves of BM survey
- 9 Analysis and comparison to peers
- 11 Longitudinal analysis
- 12 Link to other data available
- 14 BM2016 participants

BM Task Force

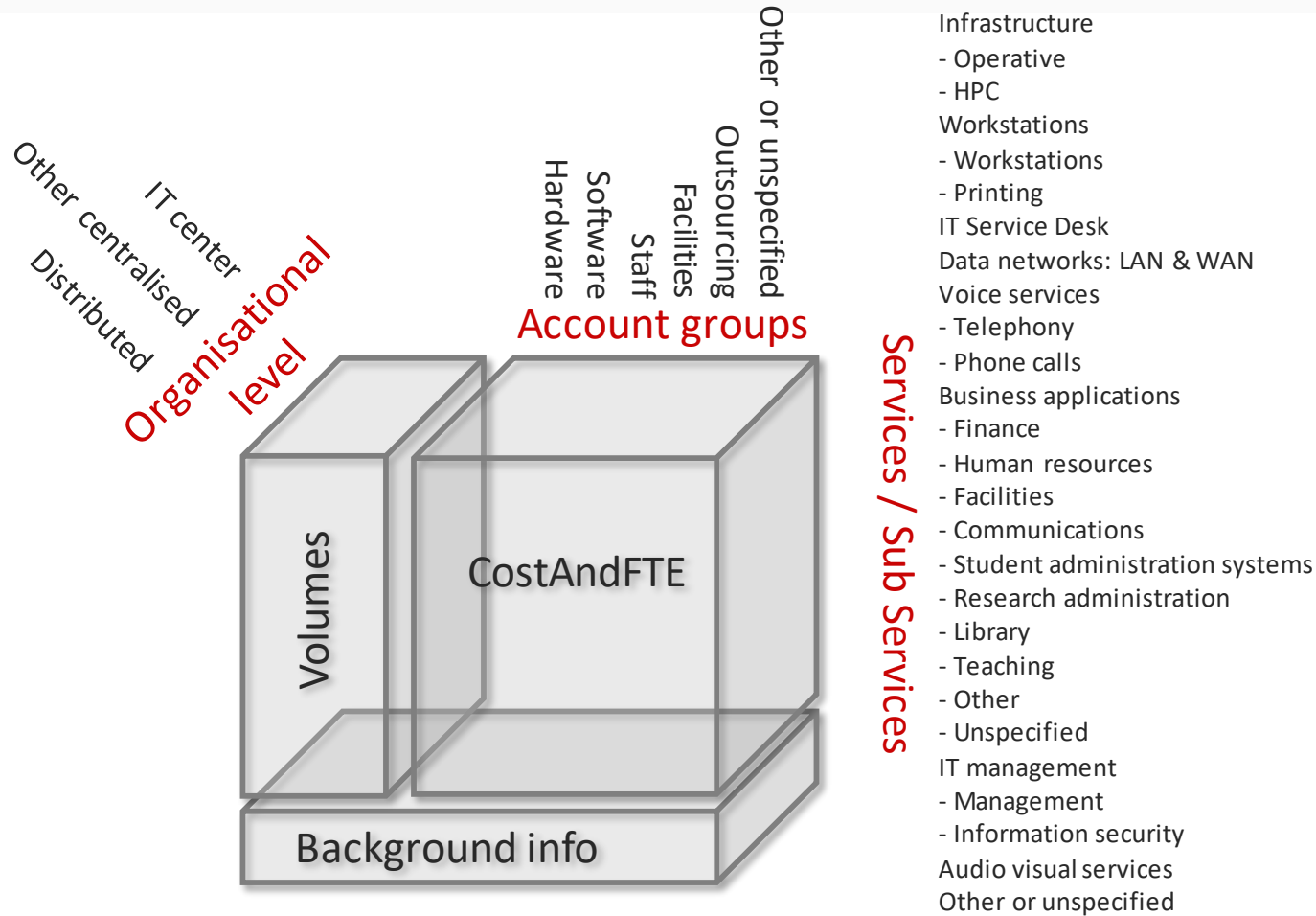
- Mr. Ilkka Siissalo, Chairman, University of Helsinki,
- Mrs. Yvonne Kivi, Secretary, University of Helsinki,
- Mr. Kurt Gammelgaard Nielsen, University of Southern Denmark
- Mr. Ole Langfeldt, Norwegian University of Science and Technology
- Mr. Jussi-Pekka Pispä, Tampere University of Technology
- Mr. Tuomo Rintamäki, Helsinki Metropolia University of Applied Sciences
- Mr. Yiannis Salmatzidis, Aristotle University of Thessaloniki
- Mr. Teemu Seesto, FUCIO - Network of Finnish Universities' Chief IT Officers
- Mr. Raimund Vogl, University of Münster
- Mr. Hans Wohlfart, KTH Royal Institute of Technology

BencHEIT Survey / Background on the survey

- EUNIS task force
- Free of charge
- A survey on IT costs and volumes of higher education institutes.
- Invented, developed and managed by CIOs (within EUNIS community)
- Participants see the analysis and each others complete data.



BencHEIT Survey / Dimensions

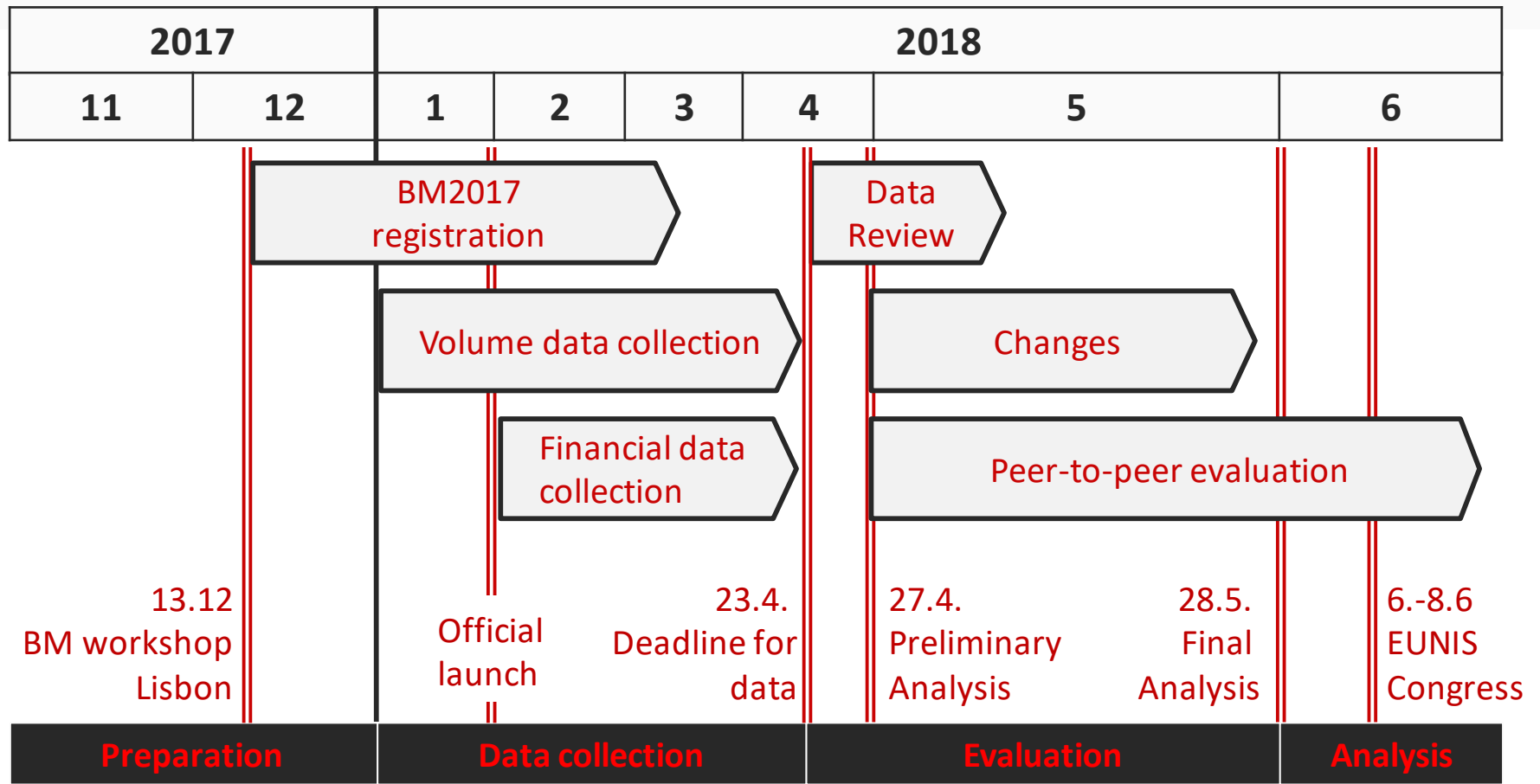




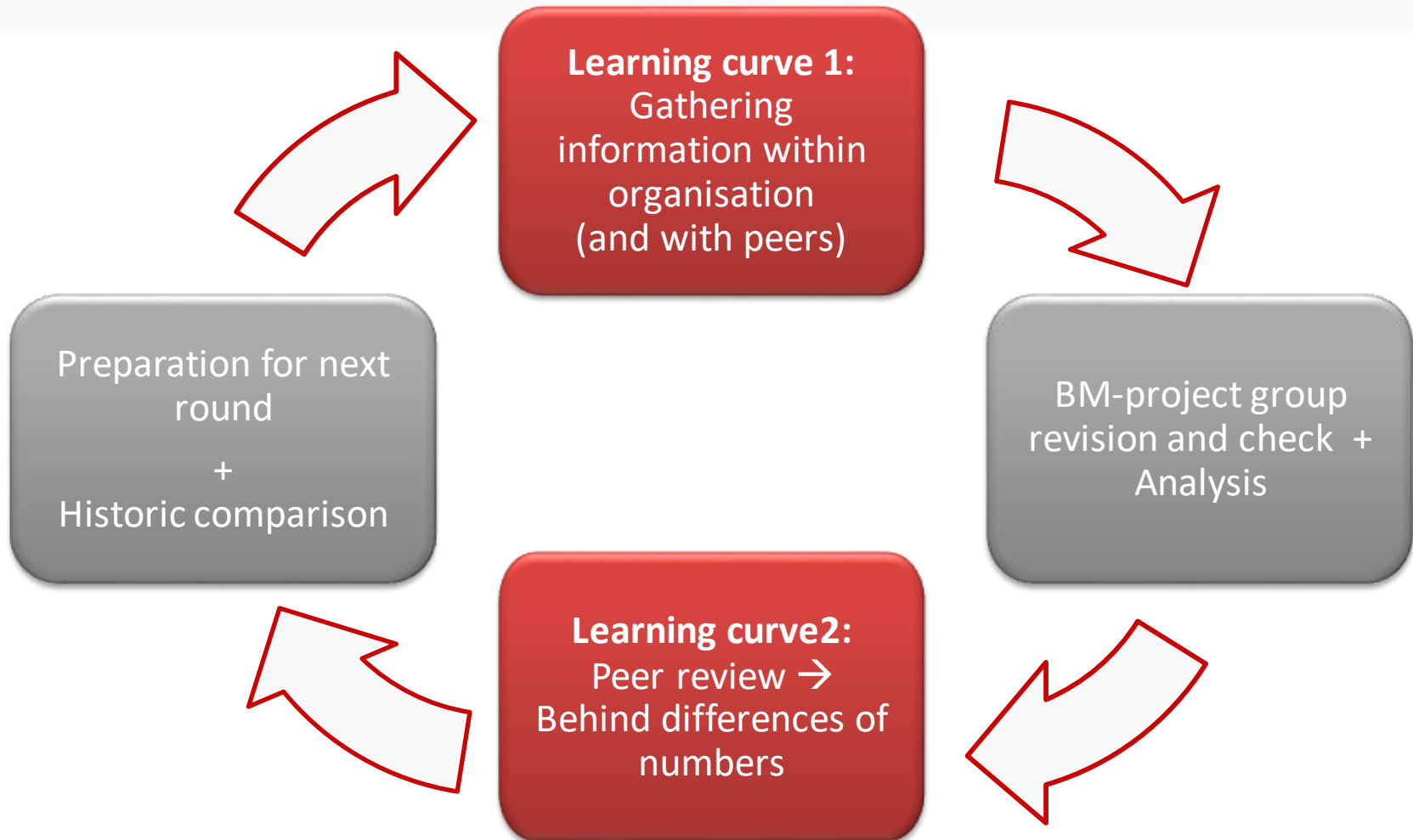
BencHEIT Survey / Introduction and principles

- Emphasis on costs and volumes of technology
- Cash flow based → fluctuation between years especially for one organisation.
- Value added tax not included.
(Tax is between you and your country)

BM2017 Survey / Preliminary timetable



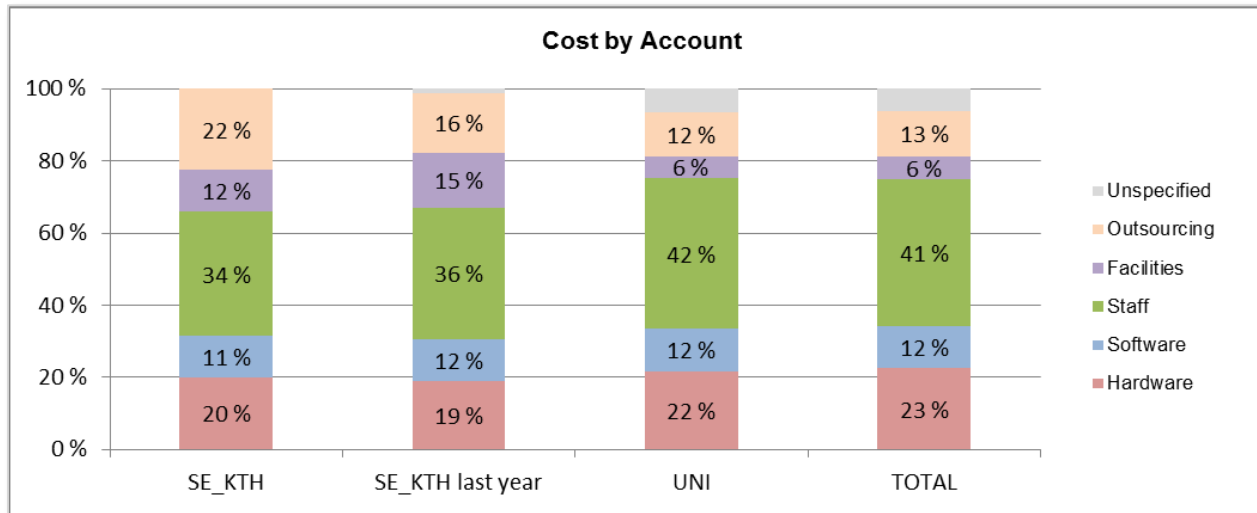
BencHEIT Survey / **The process**



BencHEIT Survey / Analysis

Me and my sector (in my own currency)

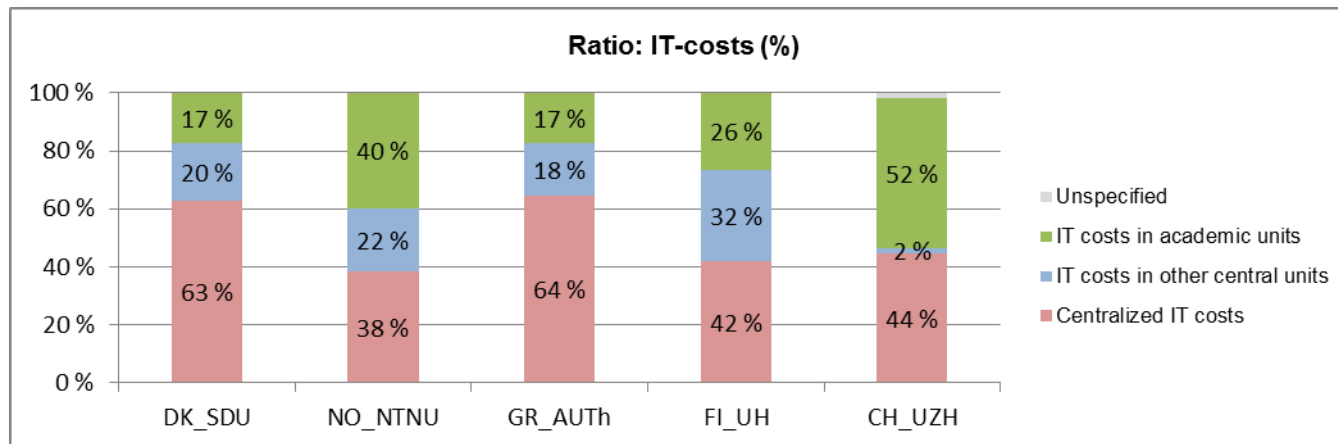
Costs by account (1000 SEK)	SE_KTH	SE_KTH last year	UNI	TOTAL
Hardware	7 205 k	6 574 k	74 296 k	88 019 k
Software	4 130 k	3 985 k	40 202 k	46 085 k
Staff	12 430 k	12 504 k	142 341 k	158 438 k
Facilities	4 193 k	5 345 k	20 904 k	24 225 k
Outsourcing	8 113 k	5 676 k	41 398 k	49 843 k
Unspecified	0 k	407 k	22 724 k	23 861 k



BencHEIT Survey / Choose 5 analysis

Me and my peers

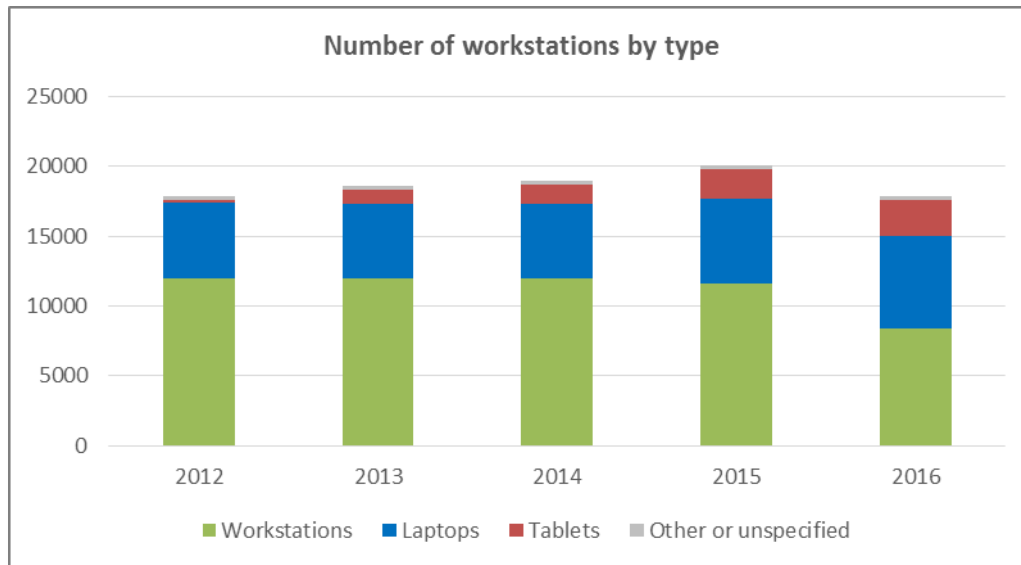
	(DK) University of Southern Denmark DK_SDU	(NO) Norwegian University of Science and Technology NO_NTNU	(GR) Aristotle University of Thessaloniki GR_AUTH	(FI) University of Helsinki FI_UH	(CH) University of Zurich CH_UZH
Background					
Completed degrees in total	7 528	8 433	7 439	6 202	5 709
Students (FTE)	26 600	35 687	47 110	23 476	25 542
Staff (FTE)	3 772	6 935	2 918	7 267	6 414
Total operational costs (million EURO)	397,1 M	909,3 M	170,1 M	687,3 M	1 242,8 M



BencHEIT Survey / Longitudinal analysis

My development
over the years

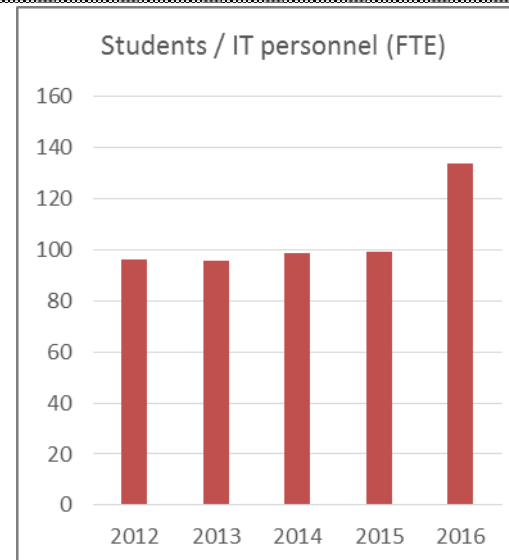
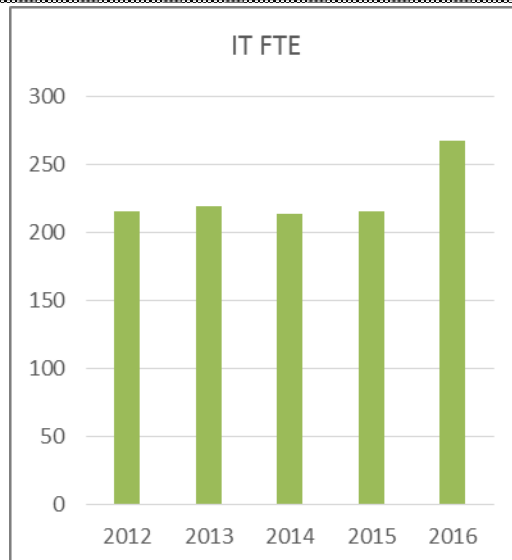
University of Helsinki	2012	2013	2014	2015	2016
Number of Workstations					
Personal use	15 000	14 600	15 550	17 250	14 900
Student classrooms	2 000	2 000	2 300	2 150	2 000
Research laboratories	700	700	700	700	700
Other	200	1 300	400		300
Total # of workstations	17 900	18 600	18 950	20 100	17 900



BencHEIT Survey / Longitudinal analysis

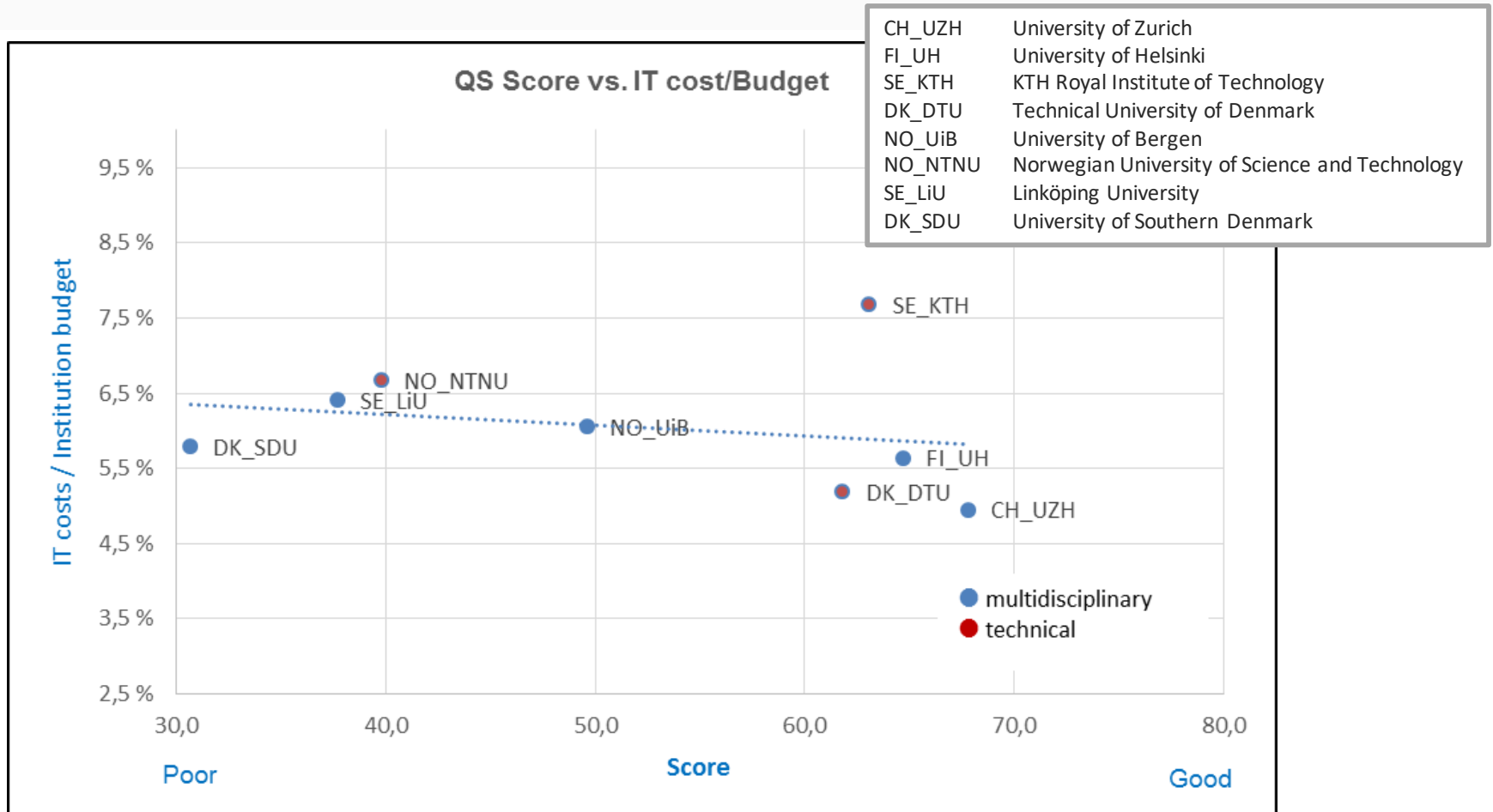
Norwegian University of Science and Techn

	2012	2013	2014	2015	2016
Background					
Completed degrees in total	3 700	3 905	4 222	4 452	8 433
Completed credits in total (ECTS)	907 566	924 732	953 220	1 074 743	1 795 552
Students (FTE)	20 667	20 907	21 082	21 324	35 687
Staff (FTE)	4 972	4 490	5 045	5 274	6 935
Number of active user accounts	36 444	39 791	39 791	41 990	64 222
Total operational costs (million EURO)	732,4 M	677,5 M	710,4 M	692,0 M	909,3 M



Merger!

BencHEIT Survey / University ranking and IT



<http://www.topuniversities.com/university-rankings>



BM – survey → **Know your numbers!**

Thank you!

bencheit@eunis.org

BM – Participating institutes 2016

- Aalto University
- Arcada University of Applied Sciences
- Aristotle University of Thessaloniki
- Centria University of Applied Sciences
- Diaconia University of Applied Sciences
- Eindhoven University of Technology
- Ernst-Abbe-Hochschule Jena
- ETH Zurich
- Fontys University of Applied Sciences
- Haaga-Helia University of Applied Sciences
- Heinrich Heine University Düsseldorf
- Häme University of Applied Sciences
- JAMK University of Applied Sciences
- Karelia University of Applied Sciences
- KTH Royal Institute of Technology
- Lapland University of Applied Sciences
- Lappeenranta University of Technology
- Laurea University of Applied Sciences
- Linköping University
- Luleå University of Technology
- Metropolia University of Applied Sciences
- National and Kapodistrian University of Athens
- Norwegian University of Science and Technology
- Oslo and Akershus University College of Applied Sciences
- Oulu University of Applied Sciences
- Police University College
- Saimaa University of Applied Sciences
- Savonia University of Applied Sciences
- Seinäjoki University on Applied Sciences
- South-Eastern Finland University of Applied Sciences
- Tampere University of Applied Sciences
- Tampere University of Technology
- Technical University of Denmark
- Turku University of Applied Sciences
- Umeå University
- University College of Northern Denmark
- University of Basel
- University of Bergen
- University of Gothenburg
- University of Helsinki
- University of Lapland
- University of Latvia
- University of Maribor
- University of Münster
- University of Oslo
- University of Southern Denmark
- University of St.Gallen
- University of St.Gallen
- University of Stavanger
- University of Stockholm
- University of Tampere
- University of Tartu
- University of the Arts Helsinki
- University of Tromsø – The Arctic University of Norway
- University of Zurich
- Uppsala University
- Örebro University