



IT benchmarking between Swedish authorities as decided by the Government Offices of Sweden

Karoline Westerlund, IT-strategist
Umeå University
Sweden

The Government Offices of Sweden has given the Swedish National Financial Management Authority (ESV) an assignment to monitor the public authorities' use of IT and how the authorities are taking advantage of digitization opportunities.



- 2015 was the first year reported and ESV has a mission for doing this work for three more years
- 64 authorities have been identified to participate, including 15 universities
- We report seven KPI for IT costs and nine maturity dimensions (project model, maintenance model, ROI, etc)



Reported 2016

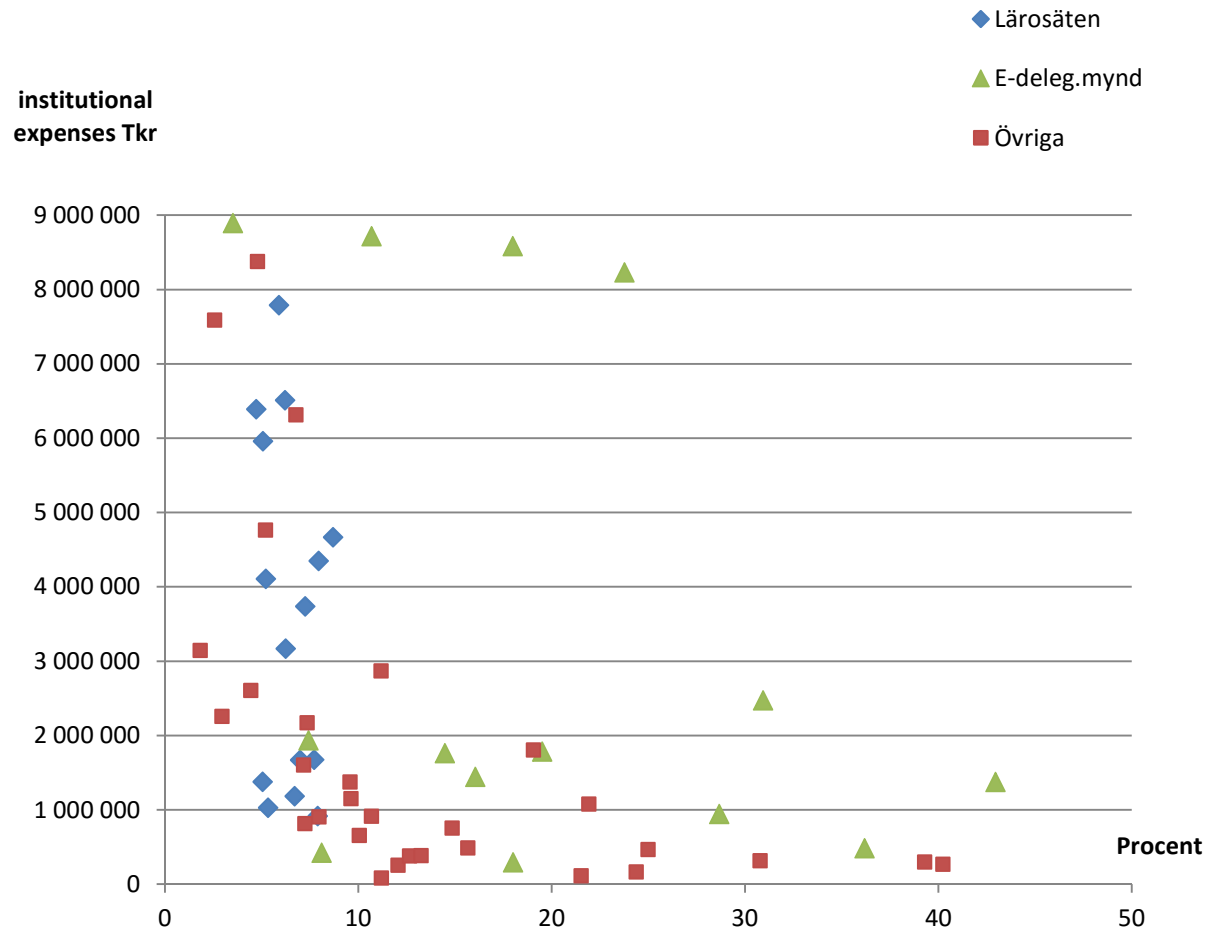
	UmU	Liu	Average univ
1. Total IT spending as a percentage of institutional expenses	5,2%	7,3%	6,3%
2. Total IT investment as a percentage of institutional expenses	0,8%	0,5%	0,8%
3. Hired staff as a percentage of total IT staff (FTE)	0,0%	15,5%	8,1%
4. Total IT cost per user . Staff, students, active accounts (heads)	575 €	898 €	860 €
5. Outsourced operations as a percentage of total IT spending	12,8%	17,3%	12,5%
6. Average cost per workplace	382 €	541 €	586 €
7. Average cost per user for voice services	244 €	204 €	254 €
8. <i>Total IT spending on running, growing and transforming</i>			
9. <i>Storage = euro/ GB = 1,18</i>			



Karoline Westerlund

2016-12-08

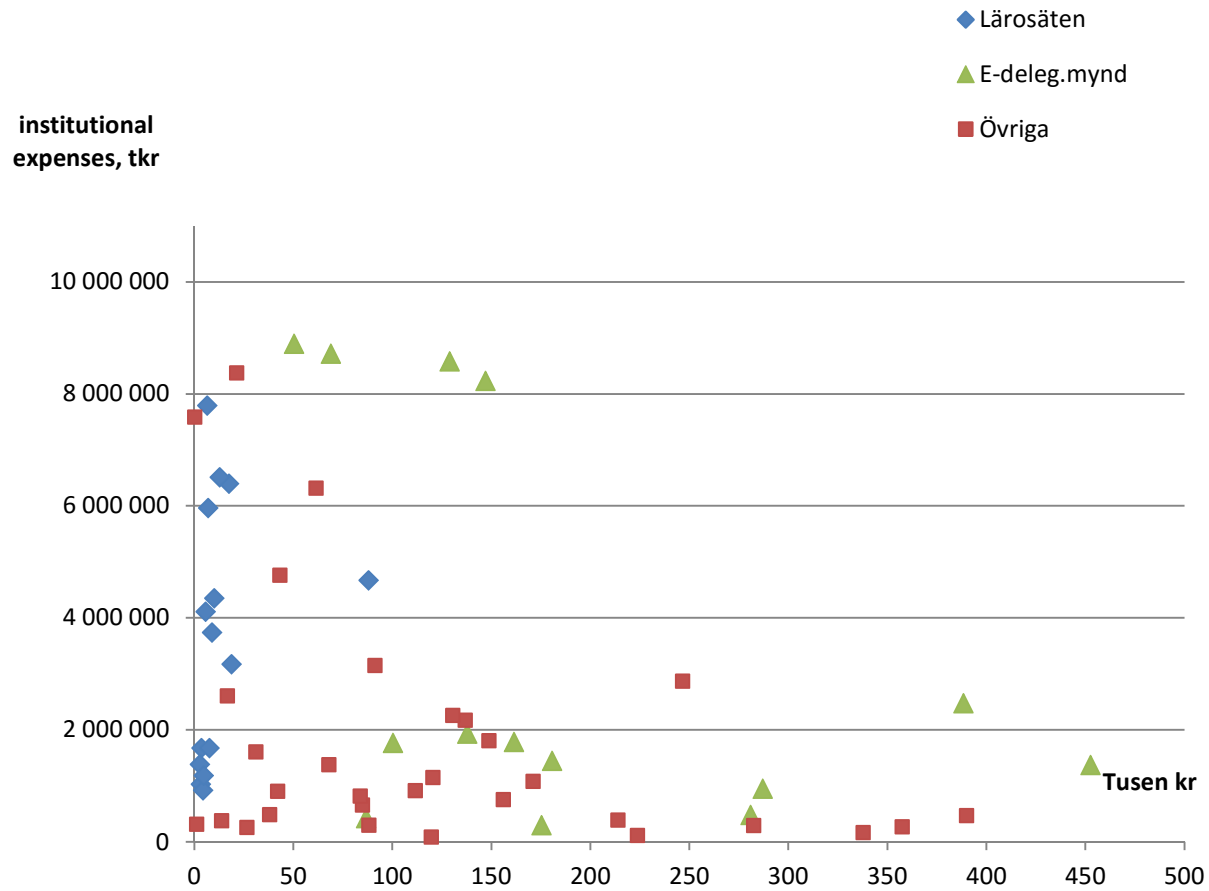
1.Total IT spending as a percentage of institutional expenses



Karoline Westerlund

2016-12-08

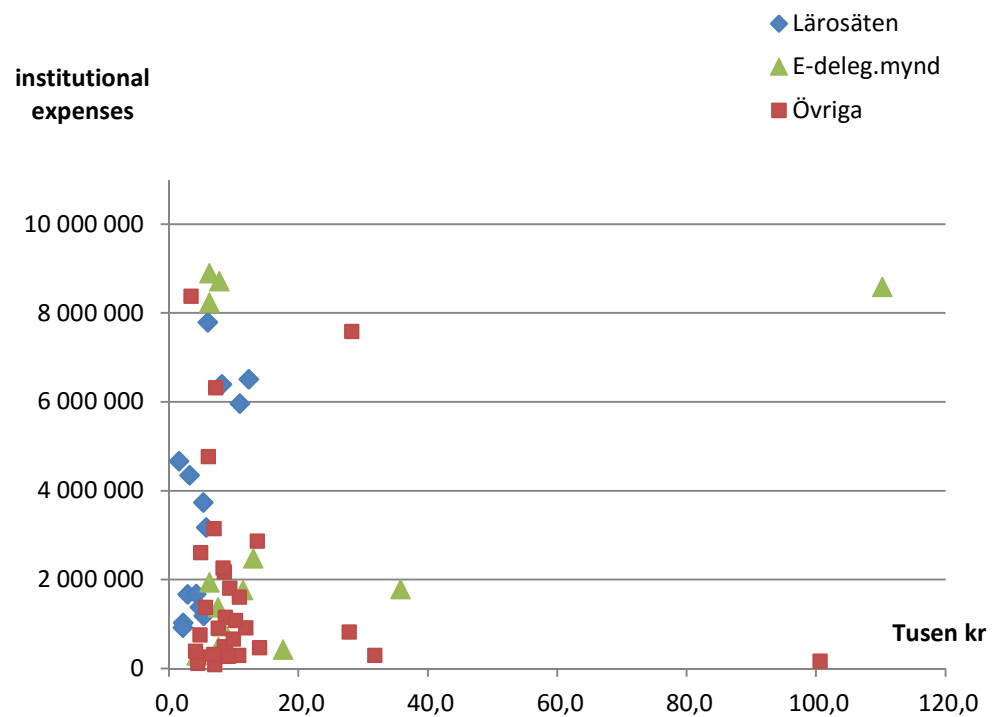
4. IT cost per user



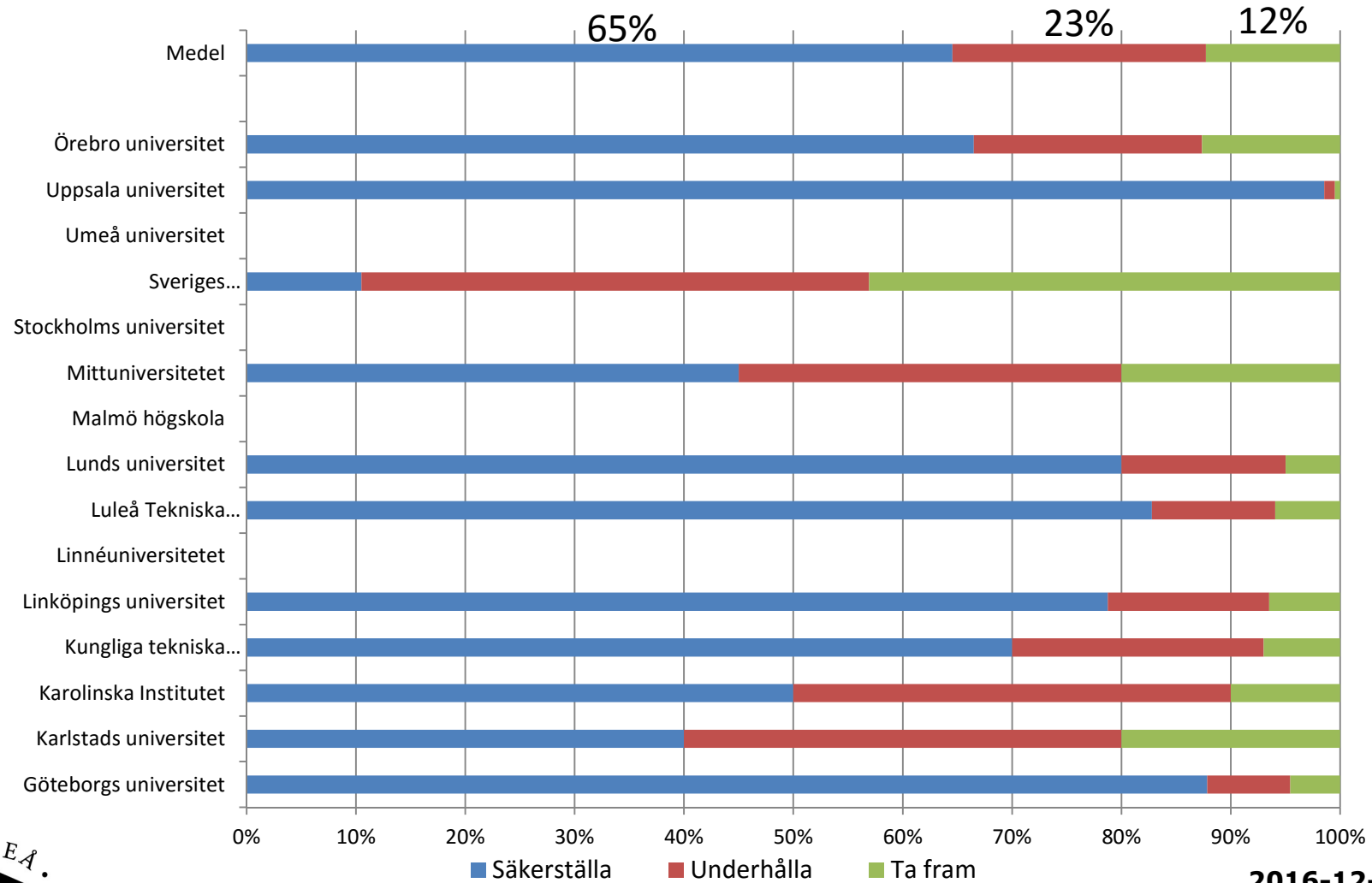
Karoline Westerlund

2016-12-08

6. Average cost per workplace



8. Total IT spending on running, growing and transforming



Karoline Westerlund

2016-12-08

IT spending UmU

	2015	2014	2008	2003
Total IT spending as a percentage of institutional expenses	5,2%	5,3%	6,1%	5,9%
Total IT investment as a percentage of institutional expenses	0,8%	0,8%	2,1%	
Institutional expenses mnkr	4 110	4 049	3 118	2 749
Total IT spending mnkr	213	213	190	162
Central IT spending mnkr	117	110	57	38
Central IT spending / Total IT spending mnkr	55%	52%	30%	24%
Total central IT spending as a percentage of institutional expenses	2,8%			
Central IT outsourcing spending as a percentage of total central IT spending	23%			



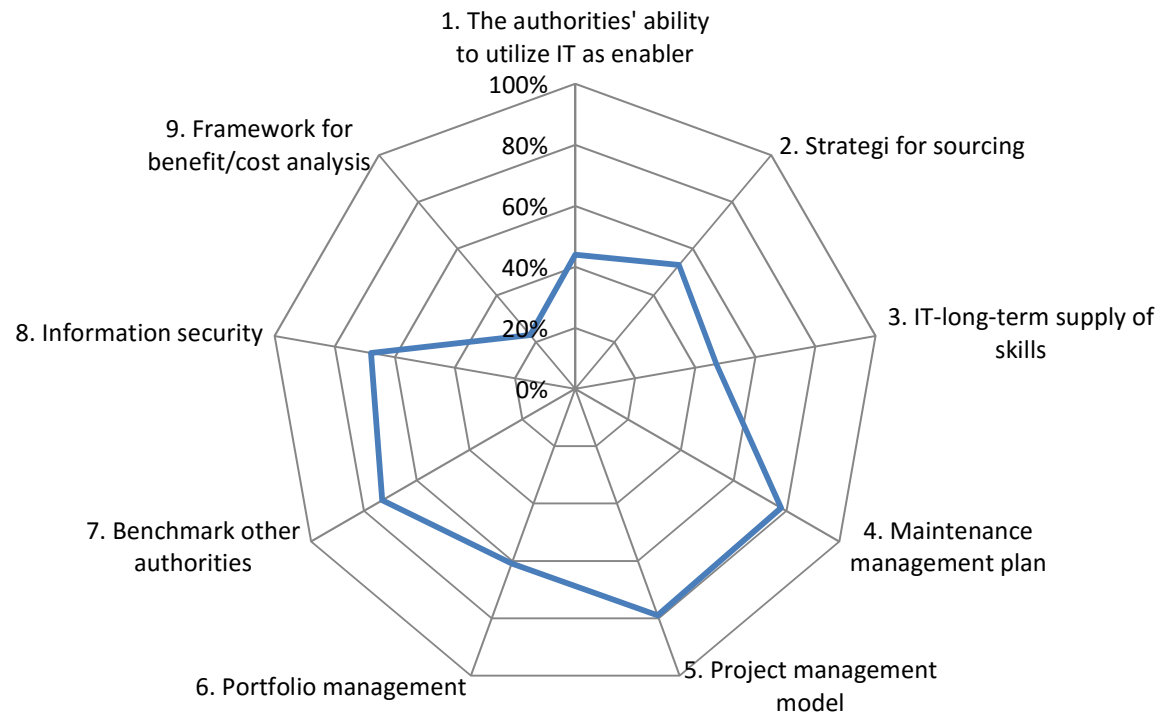
ESV - Maturity levels

0. not reflected
1. started discussions
2. started work
3. decided model
4. started implementation
5. implemented, evaluation, development
6. functioning model, implemented, fully applied



Maturity level - preliminary results

Grupp U/H 2015



Karoline Westerlund

2016-12-08