



TURUN YLIOPISTO
UNIVERSITY OF TURKU

RBAC in Production

24.06.2010 | Miika Kauppi

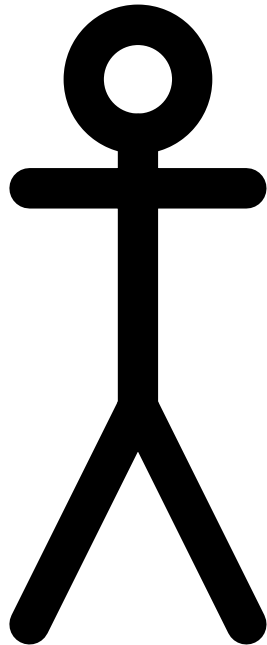
TIETOHALLINTO, ATK-keskus

UTU-IdM

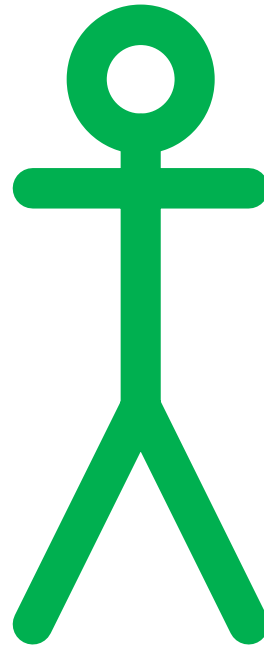
- Source and target databases
- Internal database structure
- Provisioning a new user account



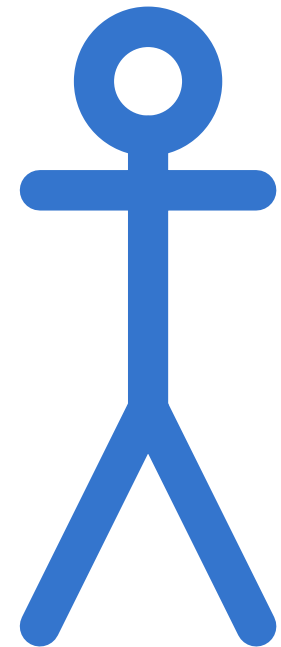
UTU users



EMPLOYEE



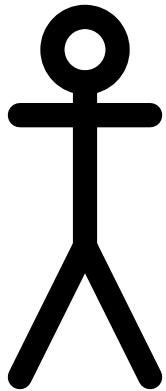
VISITOR



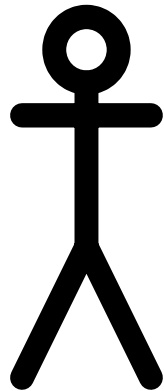
STUDENT

Managing the users

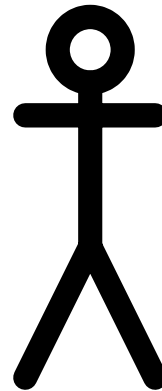
- From three to five roles



EMPLOYEE



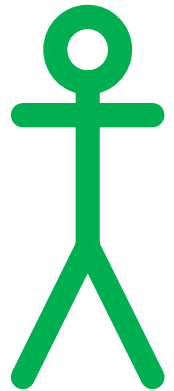
IDM
ADMIN



IT
SUPPORT

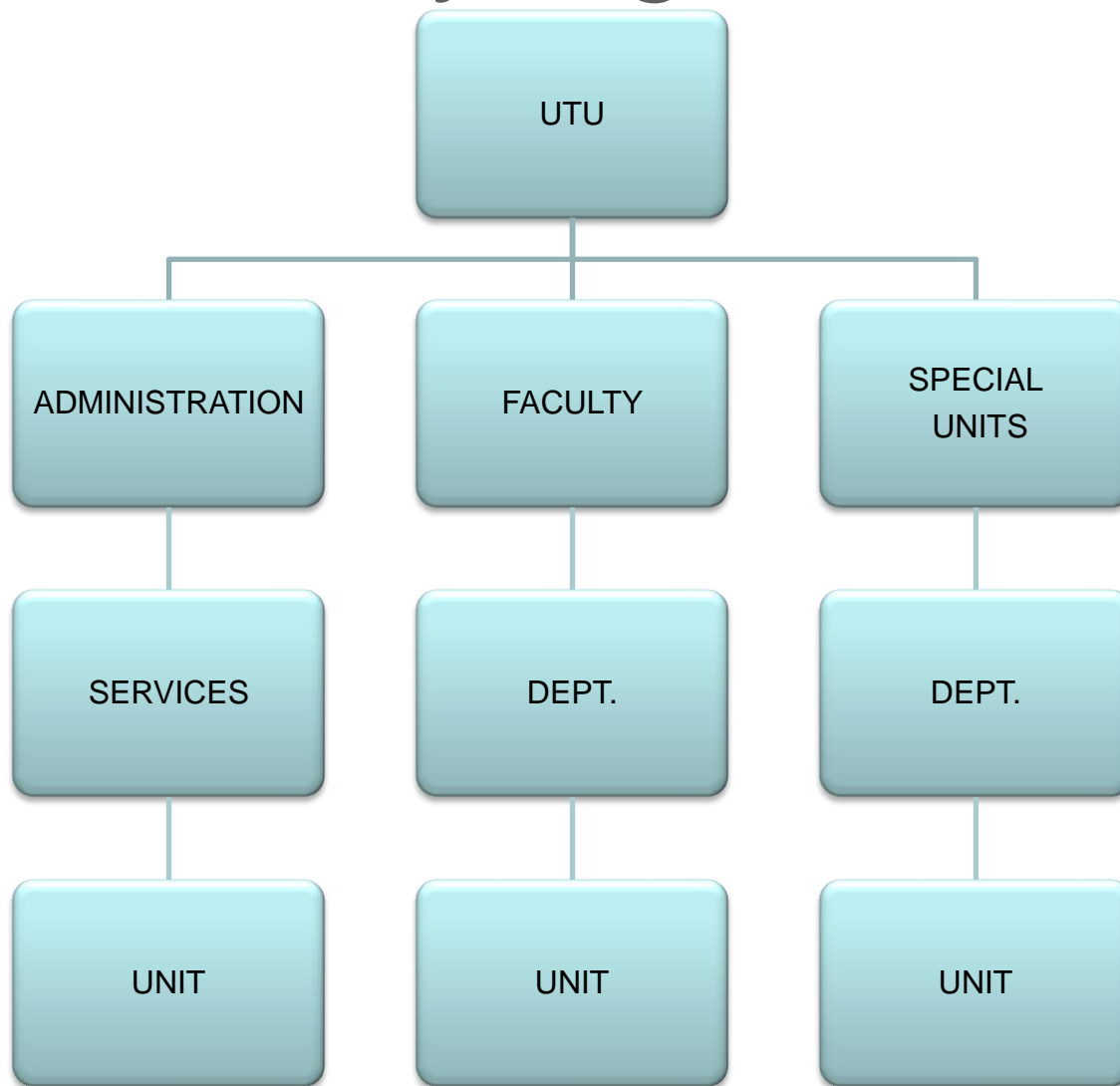


STUDENT

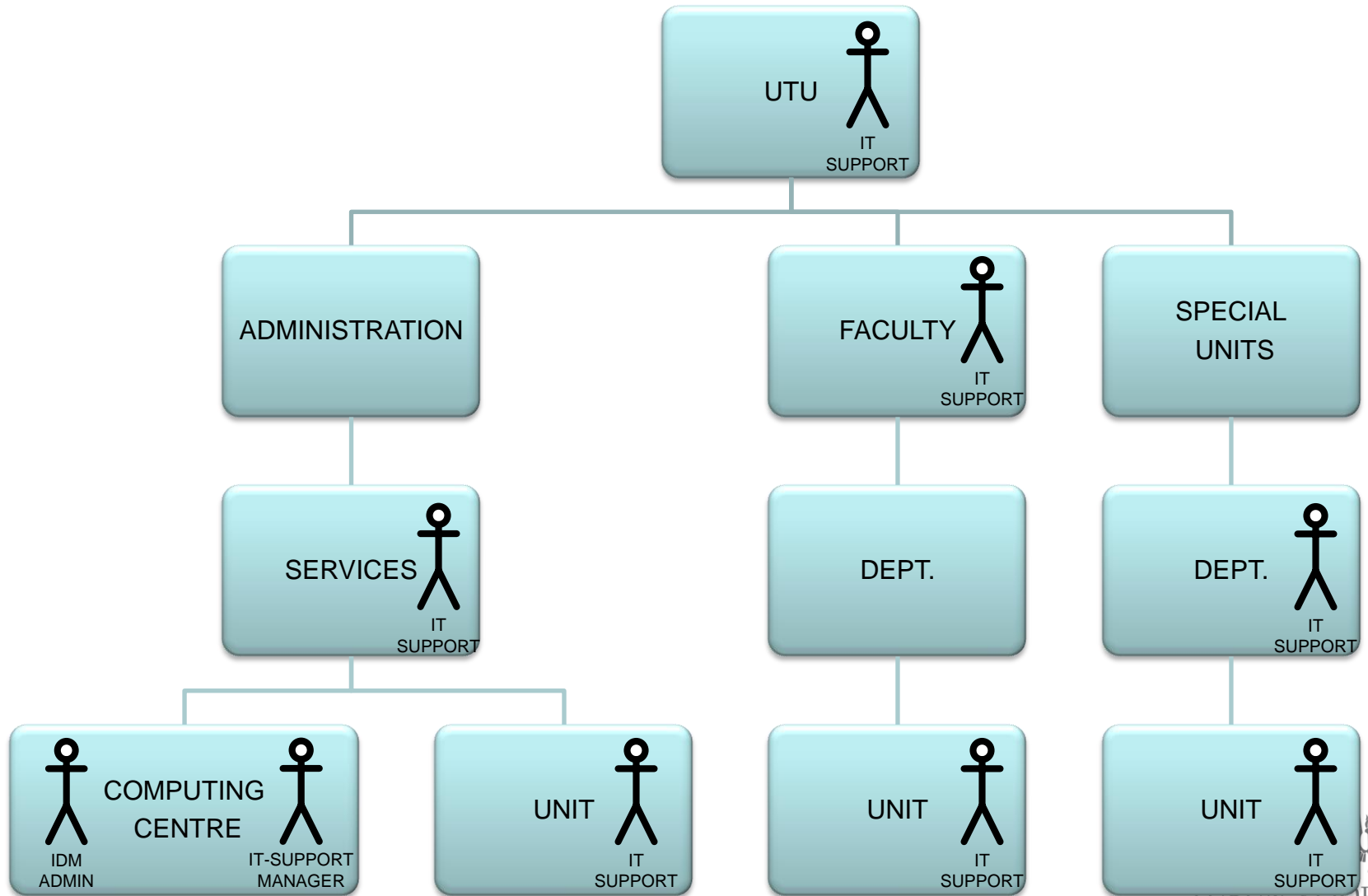


VISITOR

University organisation



Centralized and local IT-support



On board applications

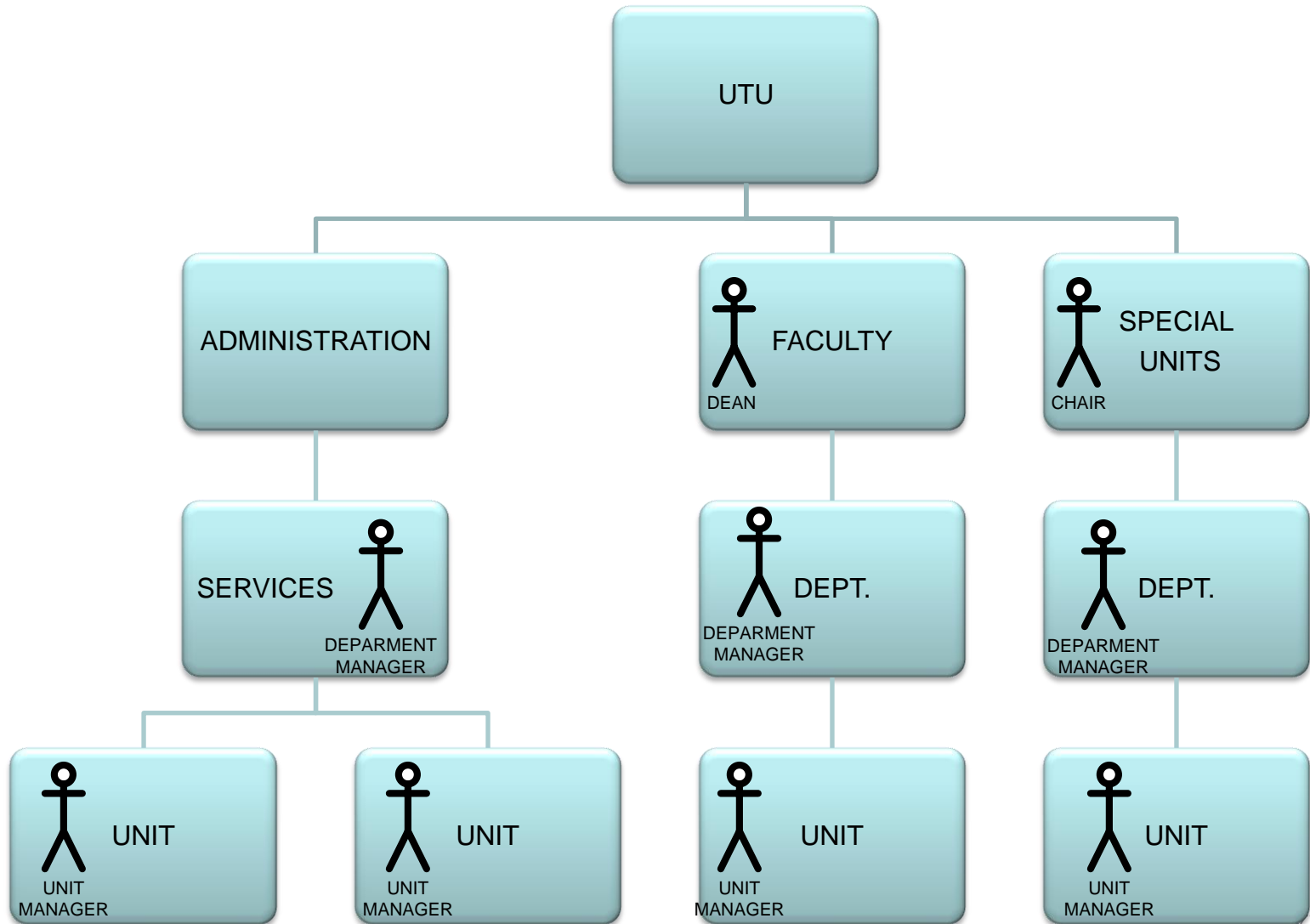
- We need to define what applications will be included
- We need owners for the applications
- We need to define application by application how their user rights are managed

Workflows

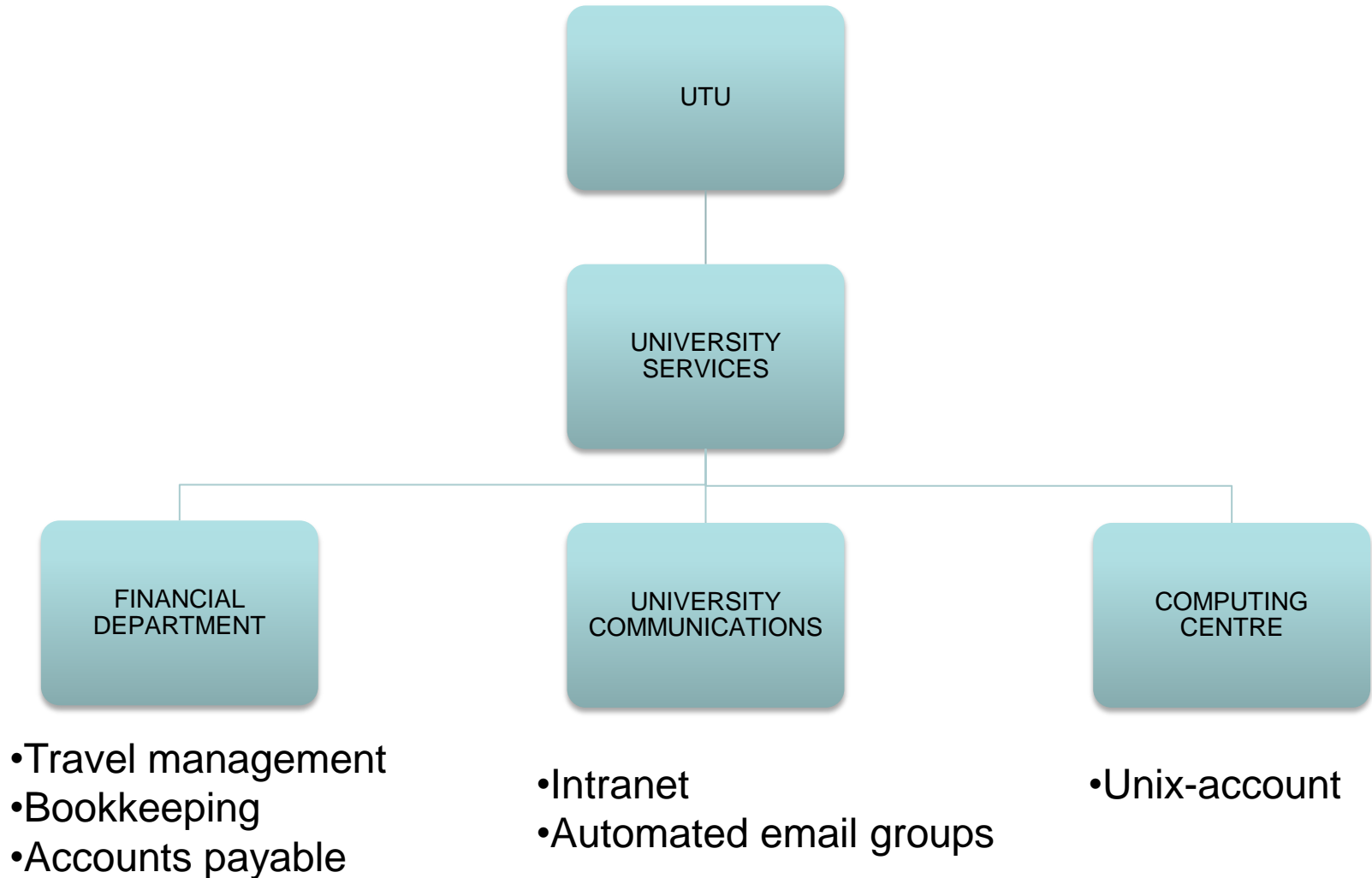
- We need to find workflows to manage the access rights
 - Financial department follows "The university rules of finance"
 - The whole university follows the "Guiding principle of the university"



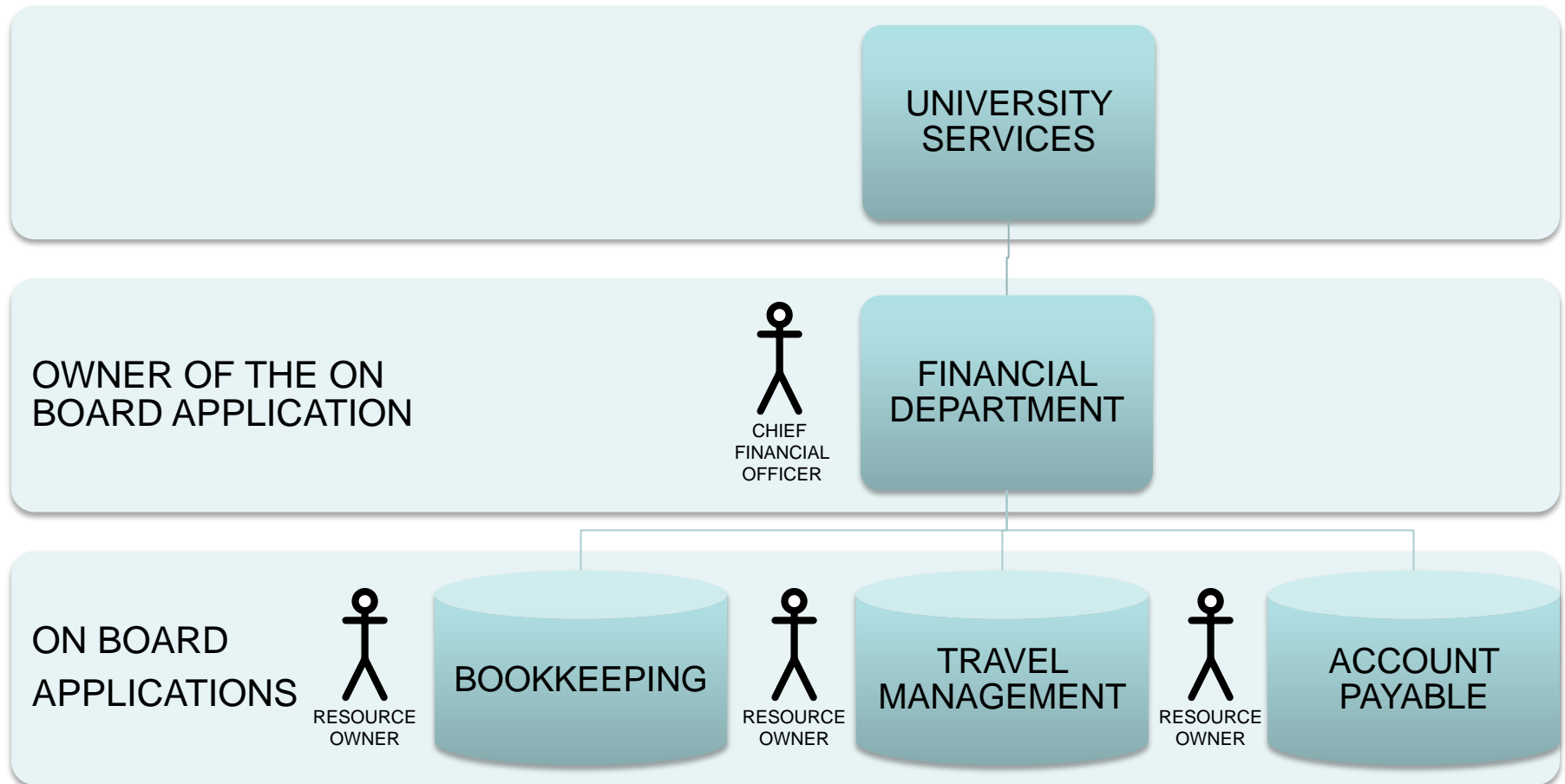
Roles received from HR-db



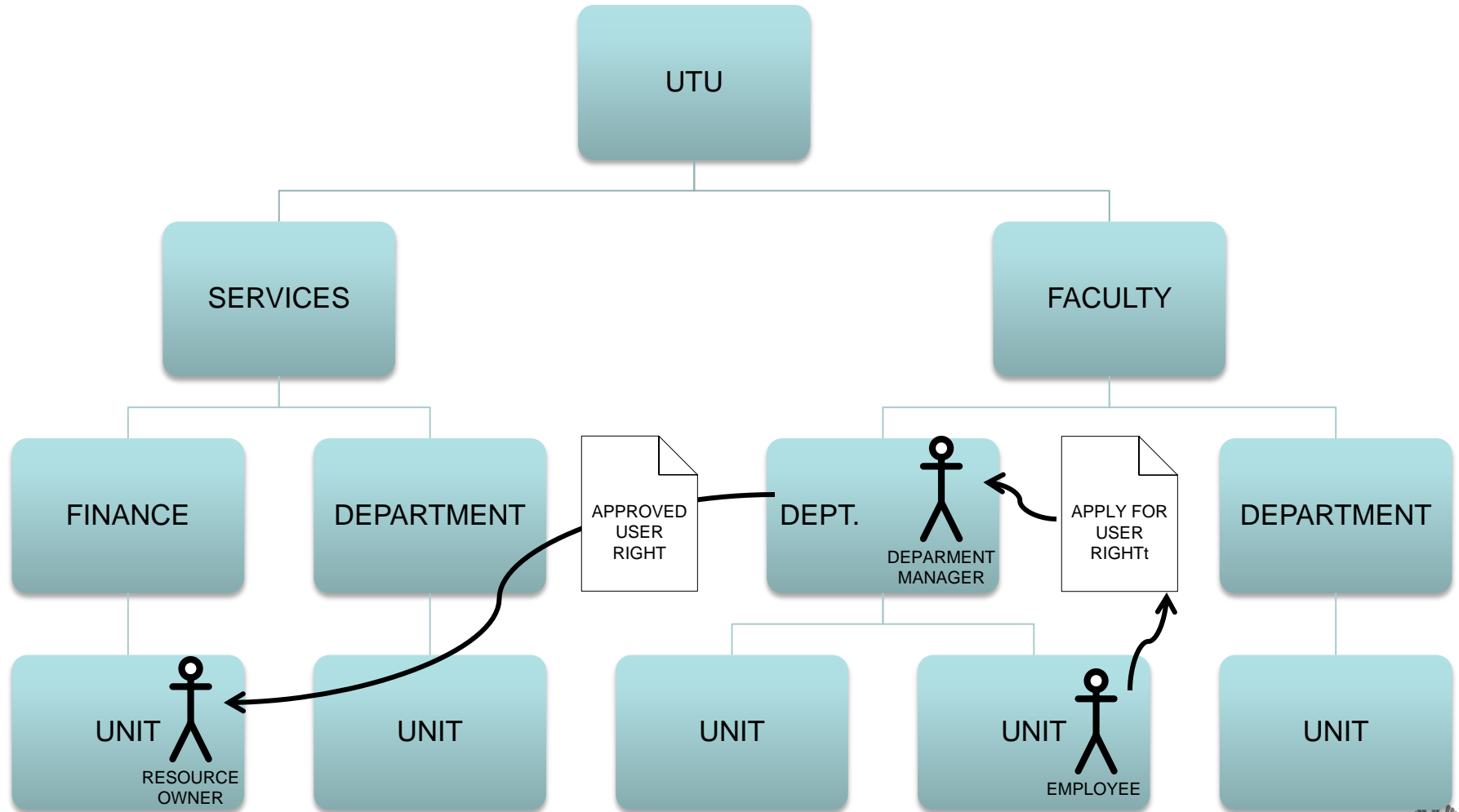
ON BOARD APPLICATIONS



Roles needed for on board applications



Workflow for financial



N=Number of roles with approver capability

Adjustable workflows

ROLE MANAGEMENT

☒ REQUESTABLE ROLE

ROLE IS REQUESTABLE TO:

EMPLOYEE

FIRST LEVEL APPROVER:

UNIT MANAGER

SECOND LEVEL APPROVER:

DEPARTMENT MANAGER

ORGANISATIONAL LEVEL:

UNIVERSITY

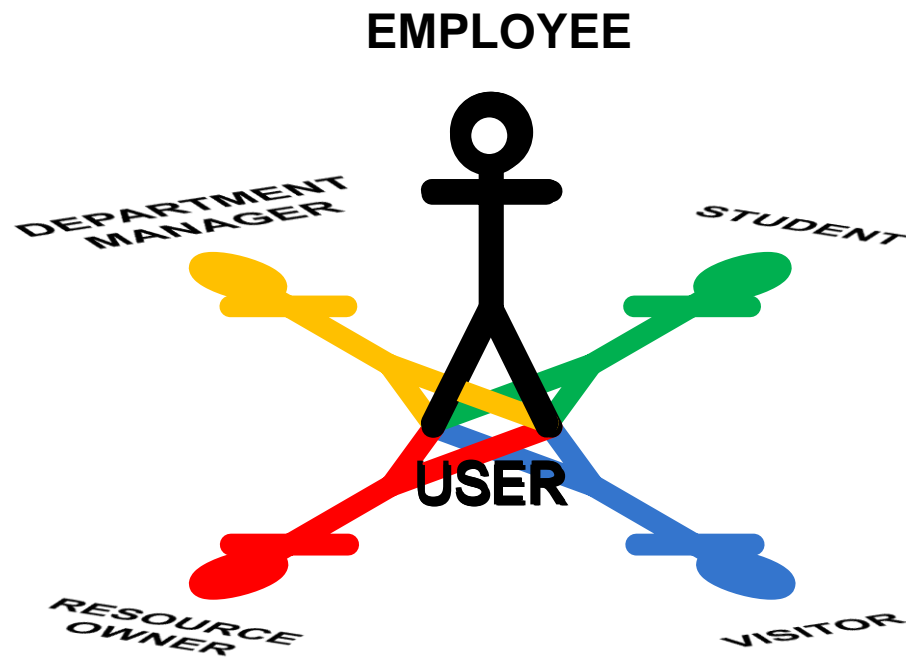


UTU role examples

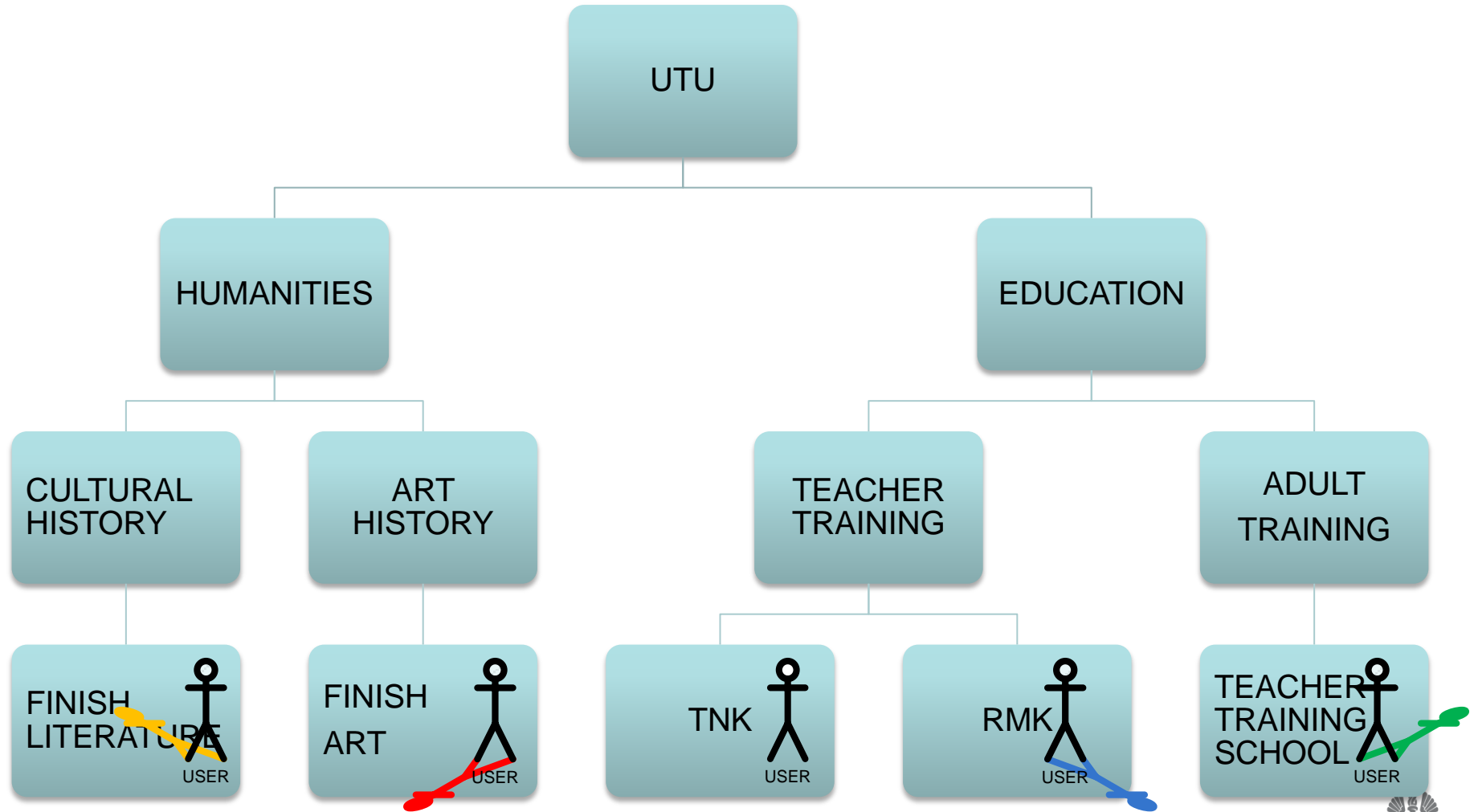
- UTU-IDM roolit
- UTU-Unix



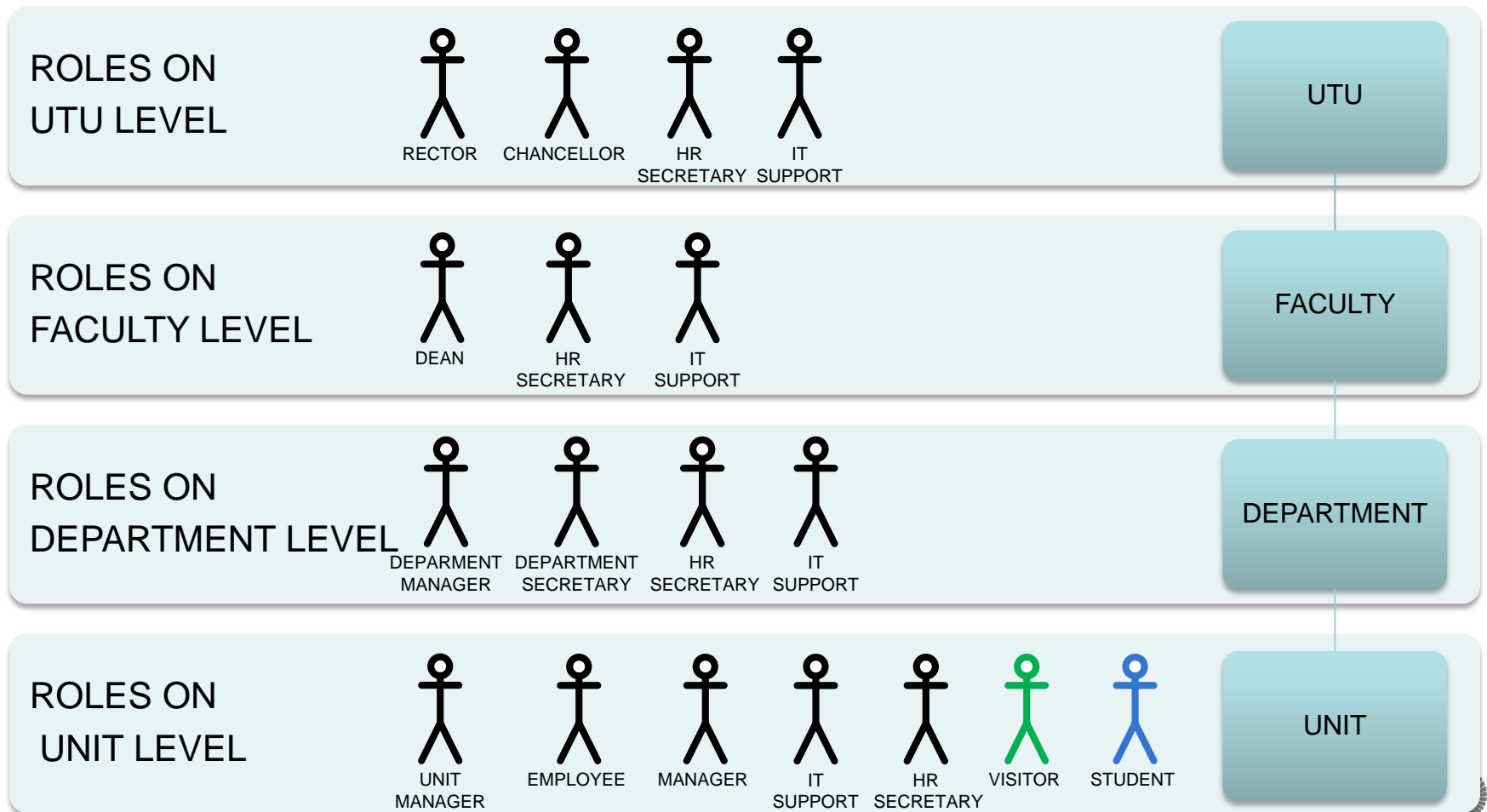
One account several roles



One user account, several roles



Roles and organization



Thanks

- Miika Kauppi
miika.kauppi@utu.fi

